

Worldwide Implementation of (Multi) CAD Service: CAD@TURCK



Thorsten Rösner, Hans TURCK GmbH & Co. KG

Course of Presentation

- Introduction of Hans TURCK GmbH & Co. KG
- Description of initial situation
- Supplier selection
- Course of project
- Status: today



- **Family-owned company with more than 2,800 employees**
- **Subsidiaries in 27 countries
+ 60 international representatives**
- **Total revenue 2010: 350 million EUR**
- **Over 15,000 products in the areas of sensor technology, field bus technology, connection and interface technology, as well as radio frequency identification for manufacturing and process automation.**
 - High temperature RFID complete system BL ident
 - uprox®+ factor 1 sensors
 - Highly compact and modular field bus and remote I/O systems

- Realization in 2006:
 - “The number of requests for products of Hans Turck GmbH & Co. KG as CAD data is growing. In most cases we have to admit that we cannot supply this data.”

Dear Mr. Smith:

Do you have the file of **BL20 Catalog** in **AutoCAD** files?

If you do have one, please email me a copy of it. Thank you so much and have a nice day.

Best regards,
Shireen Wei

Dear customer,

I am currently working on getting the desired data for you.

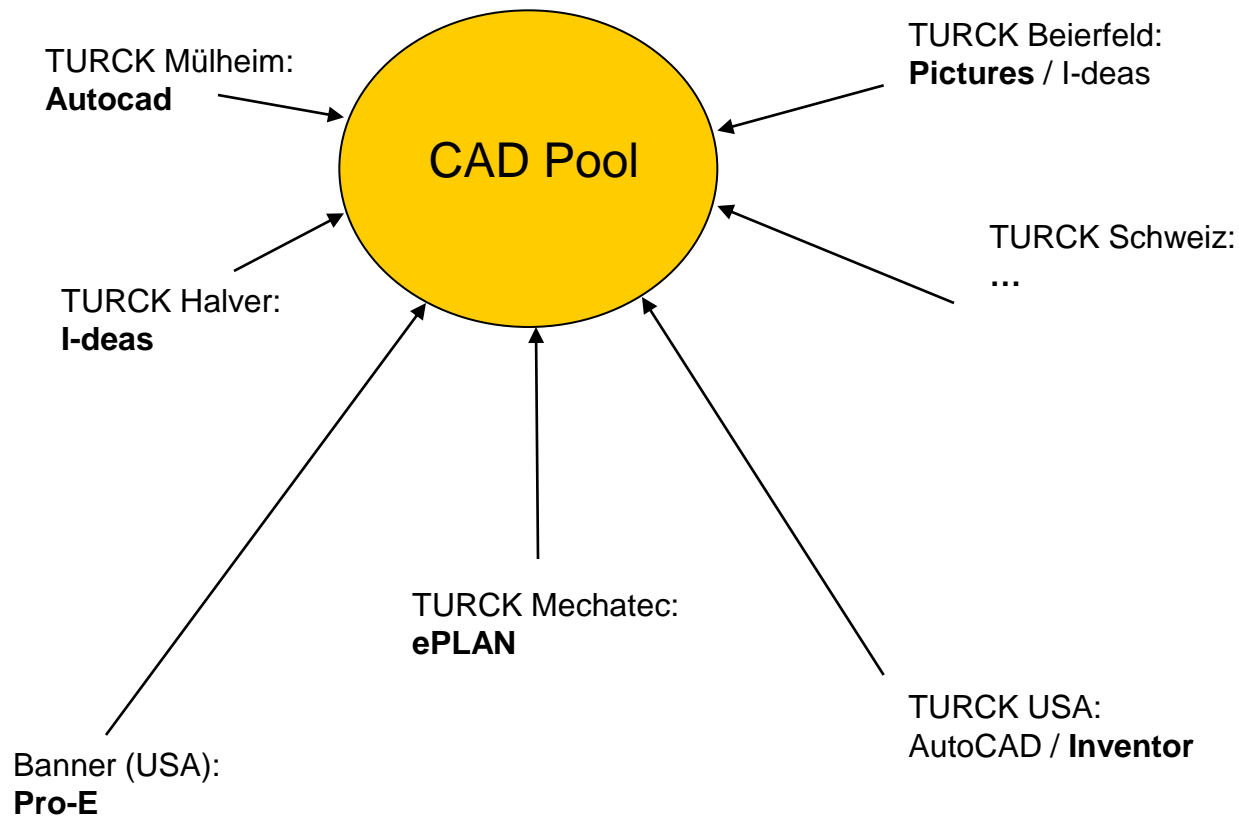
Based on your request for **CAD data** we have three formats at Sensors. Concerning the profibus modules I can only offer you a DXF format.

I have attached have three pattern files as an example. I would like to make **DXF files** available to you. Please let me know whether the data is useful to you.

Best regards,
TURCK Field Service

- E-mail requests of our customers are being forwarded to a TURCK development site. The CAD data is then sent to the customers without being previously checked.
 - **Risk of an erroneous data supply**
 - **& the danger of delivering too much information**

- A coordination of the CAD data of all development sites is hindered due to the use of too many different CAD systems.



- **Result from first survey:**

Concept #1 – Qualification & preparation of existing CAD data within the TURCK Group with internal resources.

Concept #1: CAD using Internal Resources

External

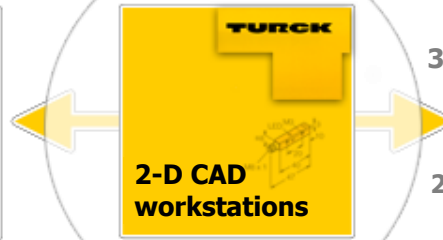
Internal

CUSTOMER

CAD formats

- .stp
- .dxf
- .dwg
- .igs

Product database
CD-Rom
E-Mail transmission



3-D exports

2-D exports

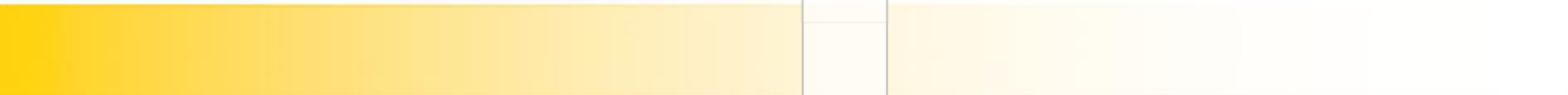
- Sales folder
- Flyer
- Application hand
- Video
- Training
- Etc

Corporate Marketing

Documentation Department

- Datasheet
- Catalog
- Instruction leaflet
- Assembly instructions
- Etc

Mechanical development



Estimation: CAD with Internal Means

Pros

- Cheap solution
- TURCK service features are enhanced / completed
- Only one “product cover” goes to customers. Technical details remain internal.
- Internal CAD know-how

Cons

- Transformation is time consuming and labor intensive
- Restricted number of data formats
- Barely (any) native data formats
- No integration of CAD workstations of customers / design engineers.
- No classification of CAD data (for example: BMEcat)
- Customers must sort their data into their PDM systems themselves in all cases
- Up to now, no CAD know-how at TURCK Mülheim location

- **Project runtime too long**
- **Solution has too little potential**
(Benchmark, customer loyalty, service scope, strategic element, etc.)
- **Resources insufficient for project success**
(Data creation: yes, build-up of CAD know-how: no)

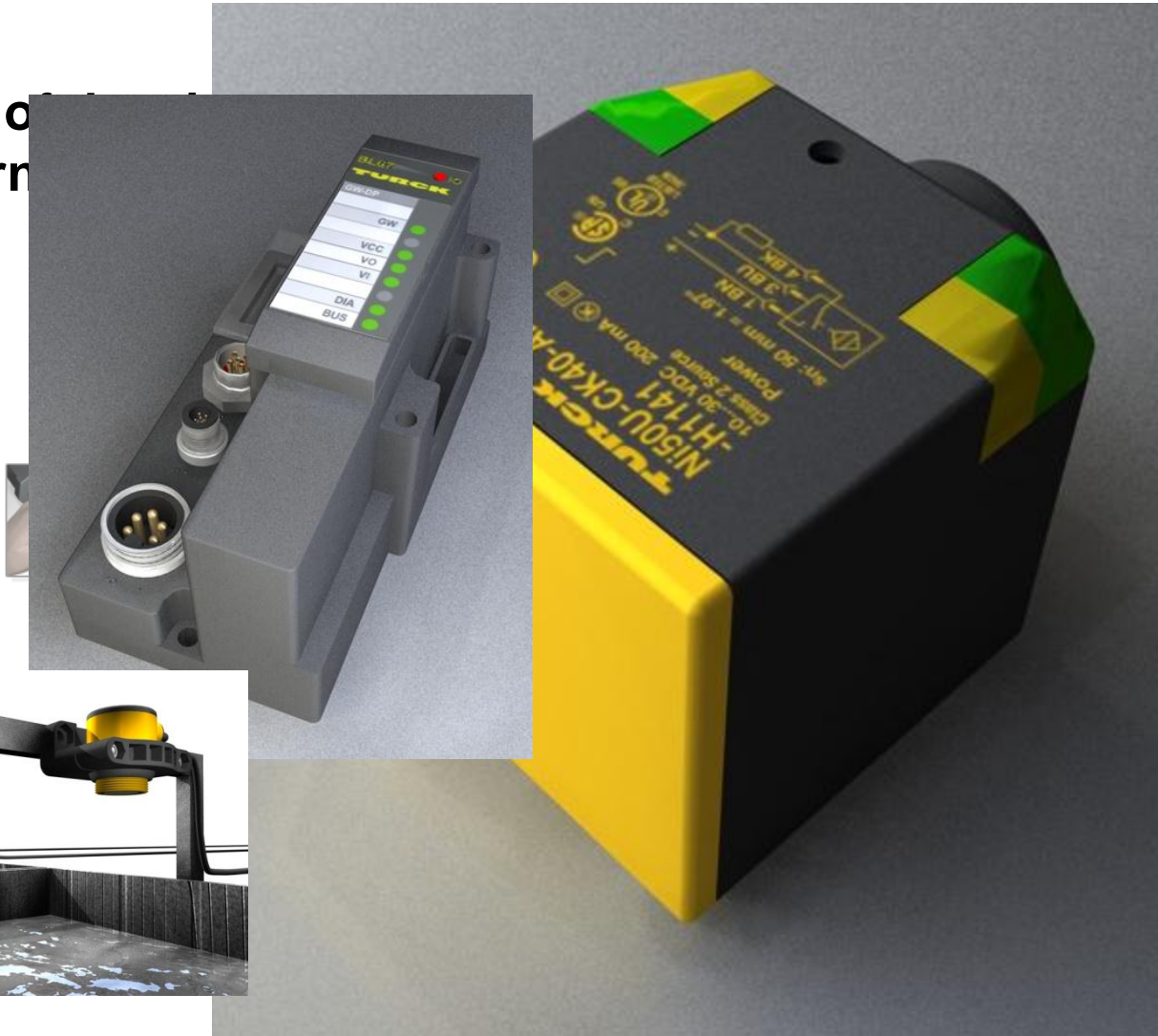


DENIED

Requirements for a CAD Solution

- Aims:

- Use of
 - Intern



& in the

dua asd asdqndmq lkd laskld
vjekl lqjdl ked atk twlqwj ldl
l wel.

iszud osmkuew lsdosie slkd
skd sldkwo soldos dos

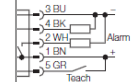
iszudf alsiao dzer kdpa olds
lkd wljkj ksdp ,sdll ,sw
knaksjd itzuenslid

dua asd asdqndmq lkd laskld
vjekl lqjdl ked atk twlqwj ldl
l wel.

lkd wljkj ksdp ,sdll ,sw
knaksjd itzuenslid

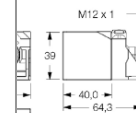
l osmkuew lsdosie slkd
skd sldkwo soldos dos

bbild



prinzip

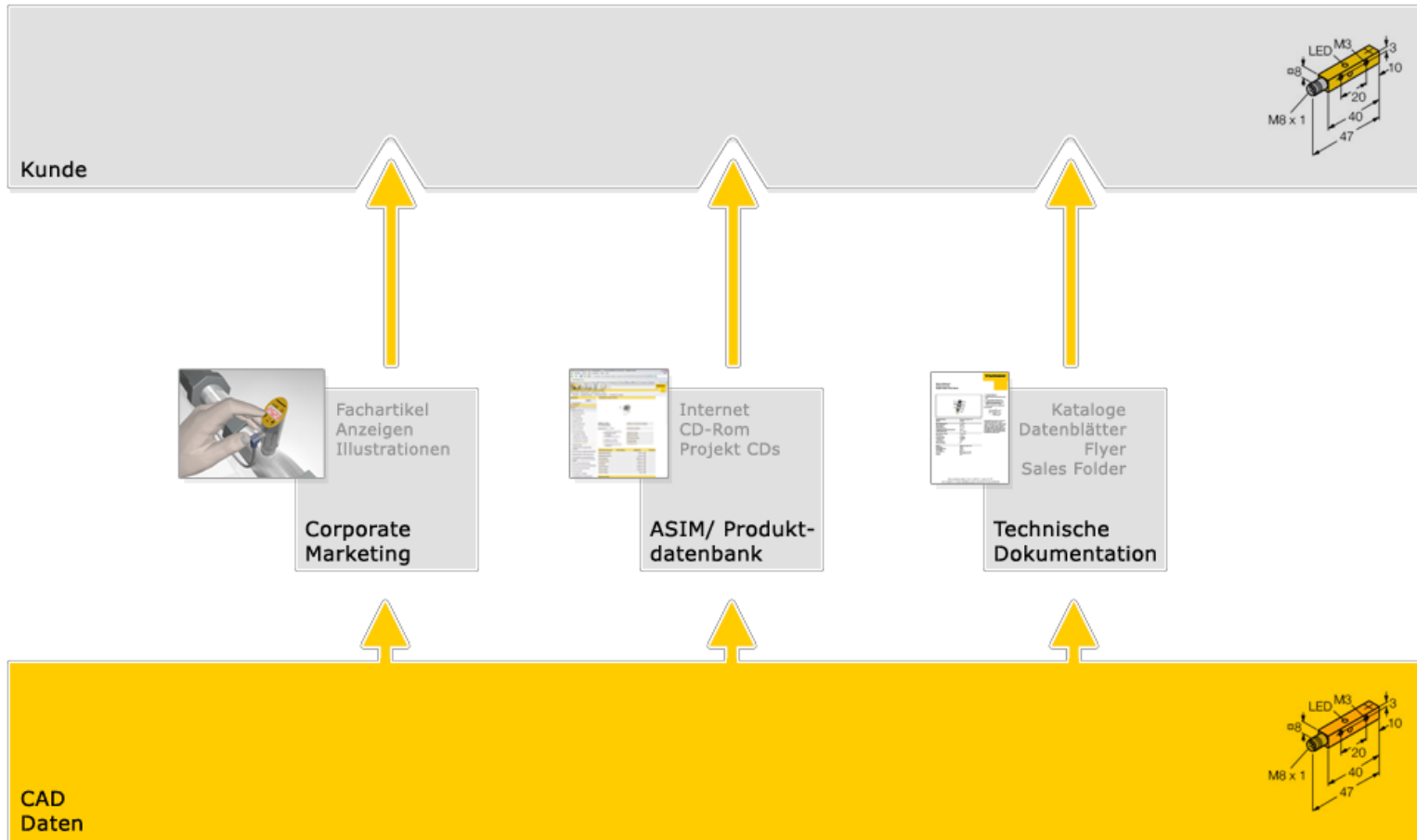
alsensoren erfassen Flüssig-
h Behälterwände hindurch,
ngen sie einen hochfrequenten
bus, dessen Echo vom
ast und ausgewertet wird.
vergleicht den aktuellen
f mit den eingelesenen Kurven .



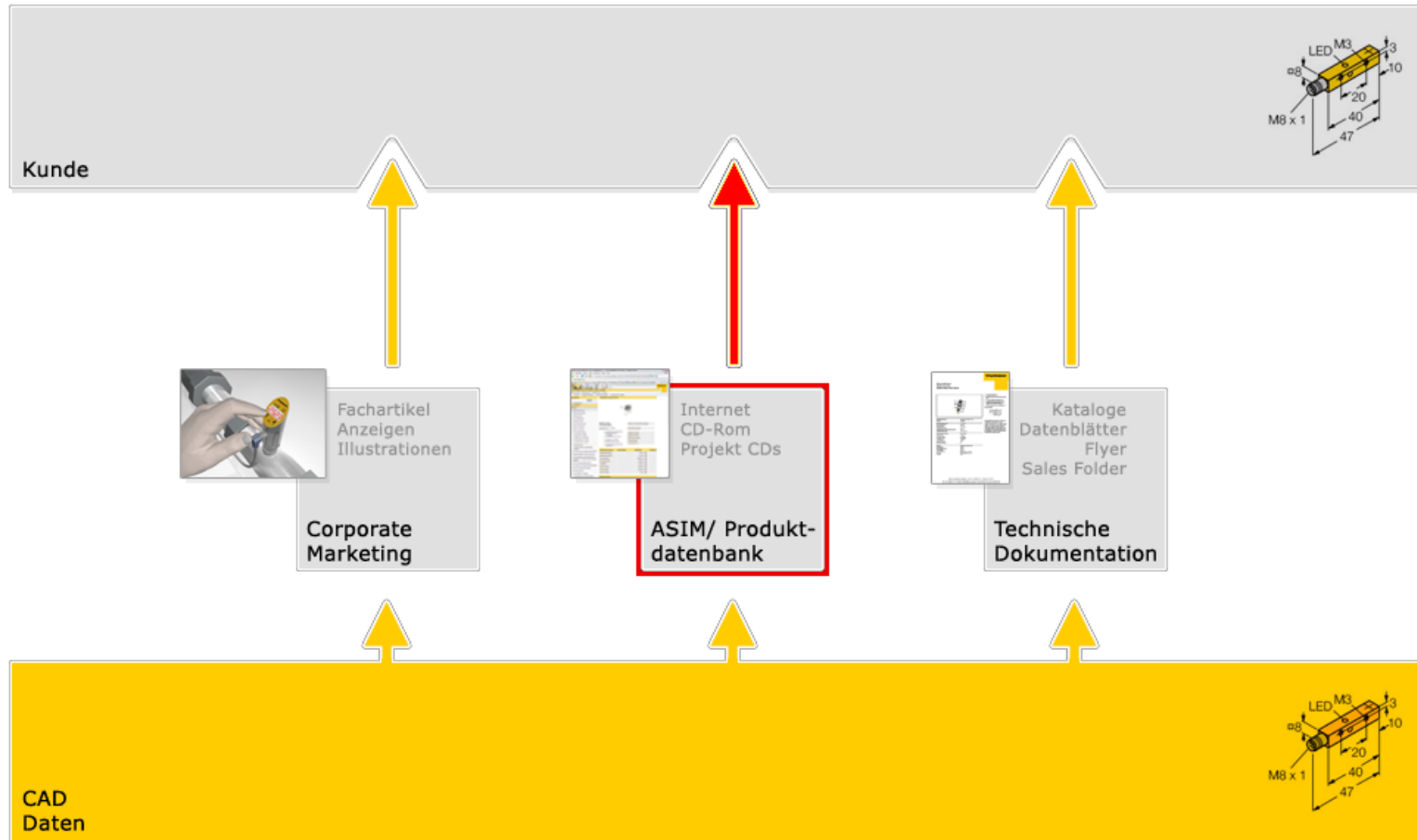
- ☑ für den Schweißbereich
- ☑ für extreme Umgebungsbedingungen (IP69K)
- ☑ für den Unterwassereinsatz
- ☑ druckfeste Sensoren

Gesamtkatalog	Induktive Sensoren	755 KB
Produktübersicht	Induktive Sensoren für die Spanntechnik	191 KB

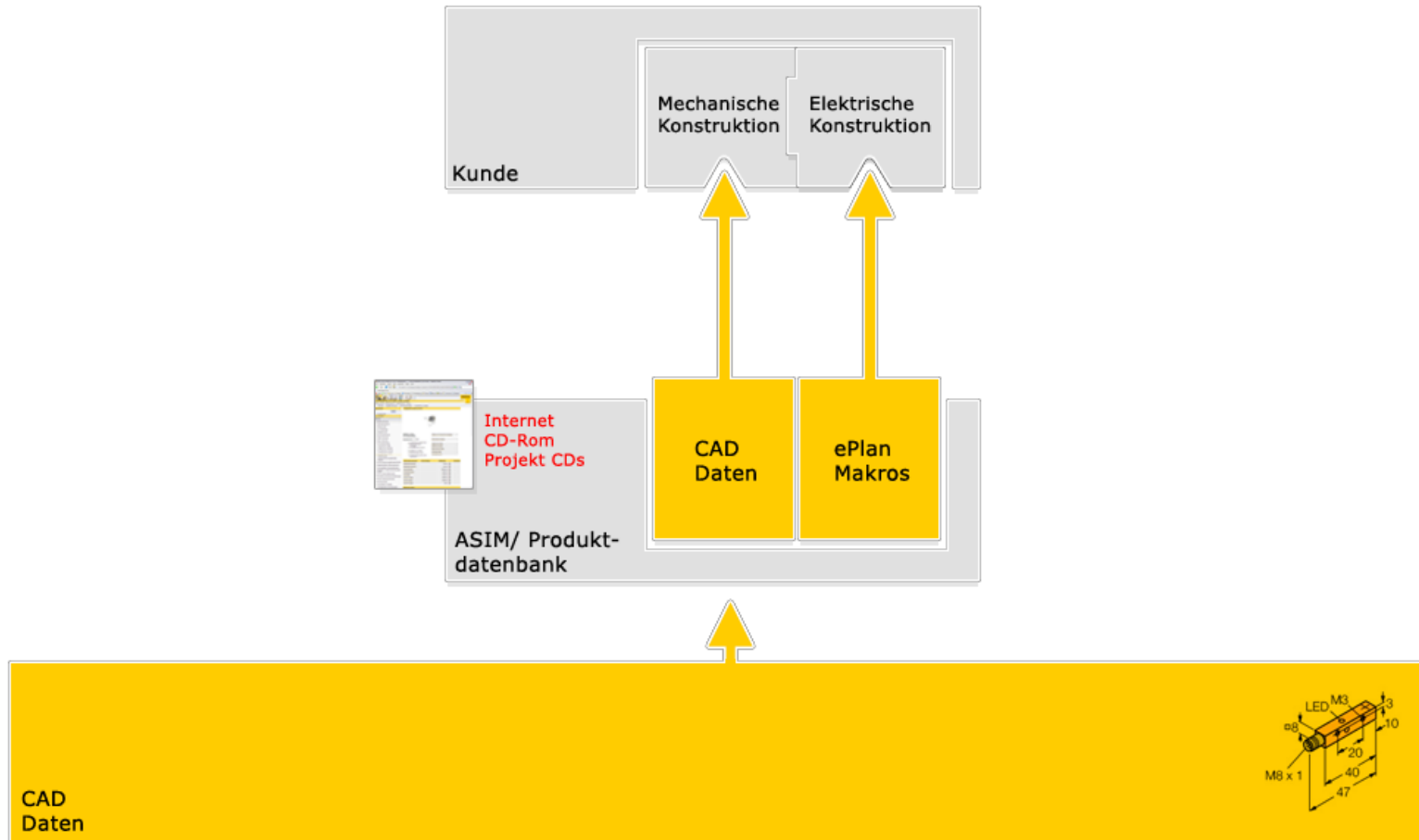
Requirements for a CAD Solution



Requirements for a CAD Solution



Requirements for a CAD Solution



- Which suppliers were evaluated?
- How did the selection land on Cadenas?

Evaluation: CAD with Cadenas

Pros

- Project runtime
(approximately: 18 months)
- Interfaces ERP/ PIM
- TURCK services are massively enhanced
- Customer obtains **HIS** CAD format from TURCK (native data)
- Only one “product cover” to customers.
(technical know-how remains internal)
- Contact information of interested parties
- Availability of our products on two further internet portals with a user number of 370,000 total
- Many Cadenas installations in universities

Cons

- Budget/ pricing model
- Dependency on Cadenas
- Cadenas: large = inflexible?



....and go!

- **October 2007:**
The basics were worked on in one workshop per department. (Level of detail, data availability, parameter assignment, etc.)

Länge Frontkappe (mm)	0	Durchmesser Frontkappe (mm)	wird bei Bedarf nachgereicht				
	3						
	5						
	10						
	15						
Länge Gewinde (mm)	19	30	40	Gewindeart	Ø 4 glattes Rohr	M12 x 1	
	22	31	45		M5 x 0.5	M16 x 1	
	25	35	46		M8 x 1	Ø 20 glattes Rohr	
	26	36	50			Ø 11 glattes Rohr	M30 x 1.5
Mutter Option Ja/Nein	8	36		Breite der Mutter (mm)	2.8	5	
Wenn Ja SW (mm)	13				4		
	17				4		
	24				4		
Länge Steckeradapter (mm)	9			Durchmesser Steckeradapter (mm)	wird bei Bedarf nachgereicht		
	10						
Länge Stecker (mm)	8			Gewinde Stecker	Ø 8 (snap) ???	7/8-16UN-2A	
	7				M8 x 1	1/2-20UNF-2A	
					M12 x 1		
Zahl der LED's	0			Verteilung (°)	45		
	1				90		
	2						
	4						
Zahl der Kontaktpinnen	2			Verteilung (°)	90		
	3				180		
	4						

Beispiel 1: B1-EG05-AP6X-V1331

Beispiel 2: N3-EG05-AP6X-H1341

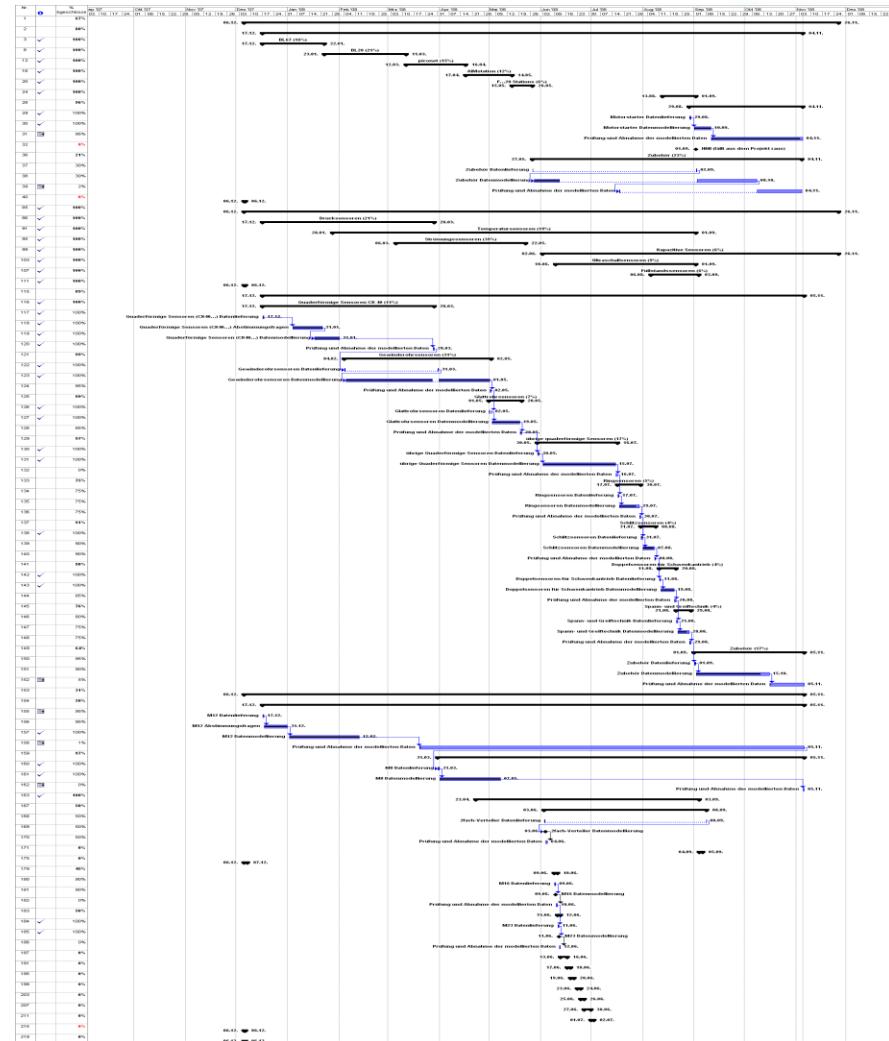
Beispiel 3: B2U-M12-AP4X-H1141

Beispiel 4: N12U-M18-AP6X-H1141

Beispiel 5: B10U-G30-AD230V2-B3131

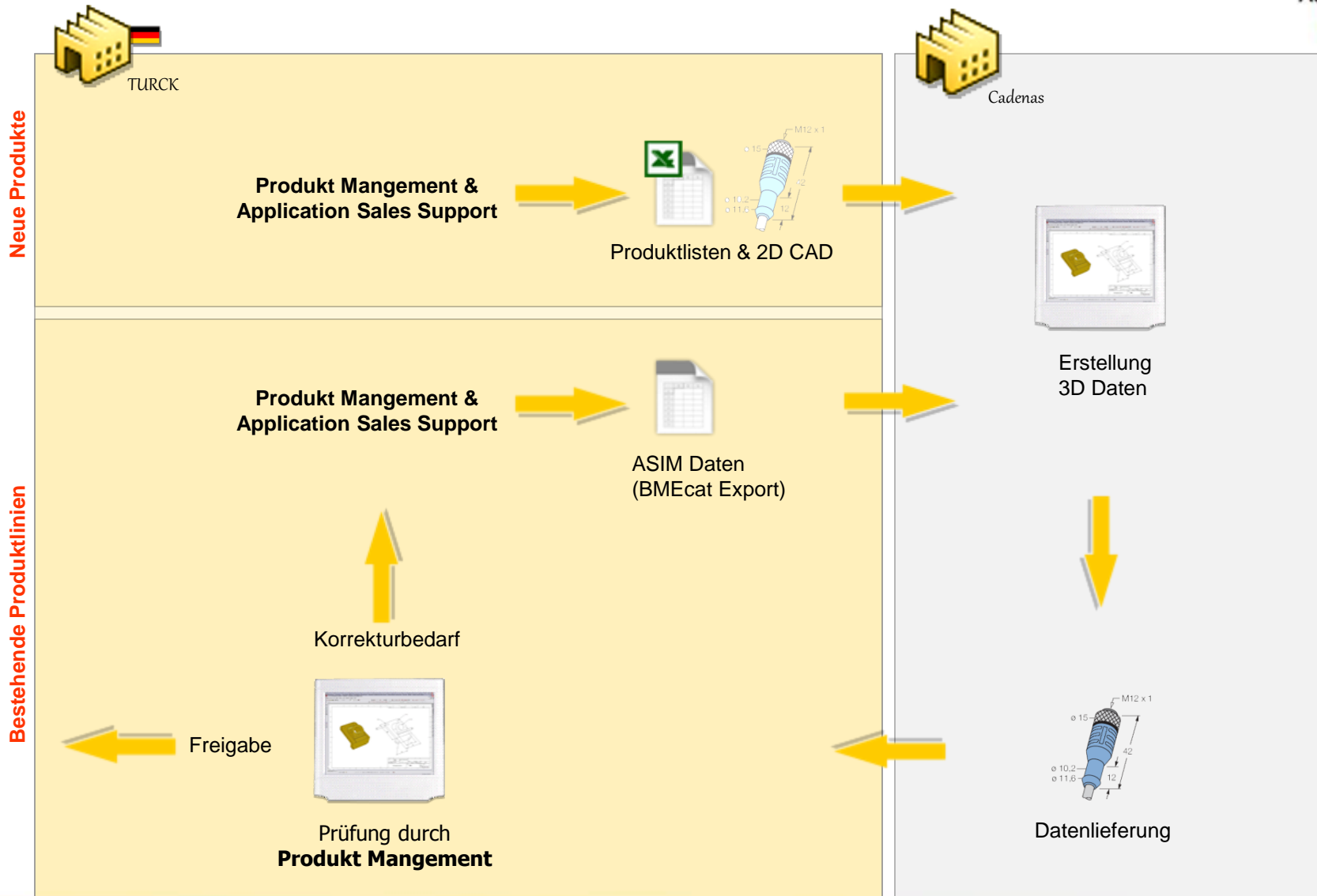
Course of Project

- **December 2007:**
 - Start modeling work (4 product areas in parallel)
- **December 2008:**
 - completion of work &
 - connection of TURCK product database to Cadenas infrastructure



Project plan 12/2008

InDetail: CAD Data Creation

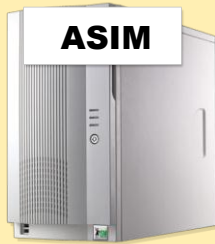


In Detail: CAD Geometries Based on Parameters

Example for parameter creation of CAD models

TURCK

Techn. Dokumentation



Internet

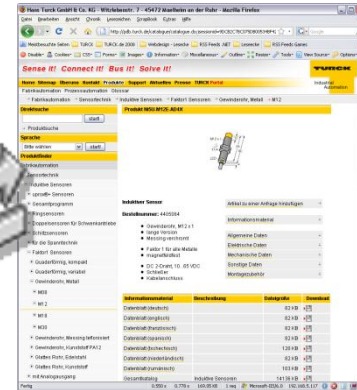
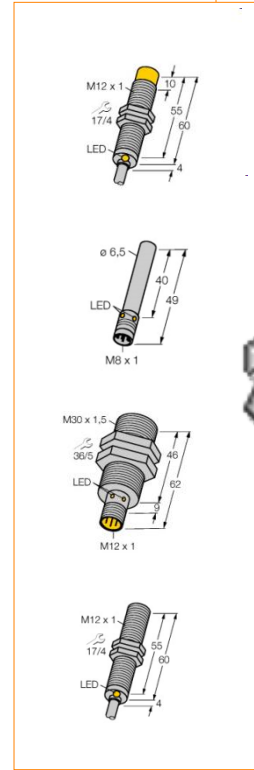


Parameter table:

- Identification number
- Type
- Thread diameter
- Thread length
- LED (yes/no)
- LED number
- Front casing length
- Different cables / socket



Cadenas



- Service currently available on 26 TURCK websites
- CAD covering current product portfolio ca. 65%
- Data enters work in the following departments:
 - **Multimedia marketing** (3-D animations/ illustrations)
 - **Technical documentation** (Hands on: Sensor technology, entire catalog)
 - **Product management**
 - **Field work / office work**

- **Expansion of CAD offer (increase coverage)**
(Business area: Process automation)
- **Create an all-encompassing ePLAN macro offer**
- **Participate in PartServer program**
- **Improve product classification**
(Wholesale)
- **Increase degree of automation in the creation of technical documentation**

Thank you!

TURCK

Industrial
Automation

- Any questions???

Technology: TURCK Online CAD Service

