

ARES + SASGROUP

THE SYNERGIES





www.frigoriferibava.it

BAVA BENCH ASSEMBLY & VALIDATION APPARATUS



*From 1938 we design and realize 'TURN KEY' test bed and special equipment for **RESEARCH, AEROSPACE and CAR** field.*

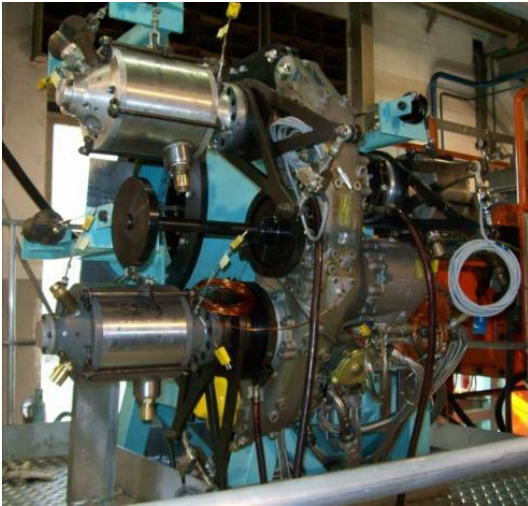
AEROSPACE: *Engines, Accessory power & engine gearboxes and related components (pumps, generators, starters...) are our mission. We support our customers from project and validation to end line production delivery with test beds and cells.*



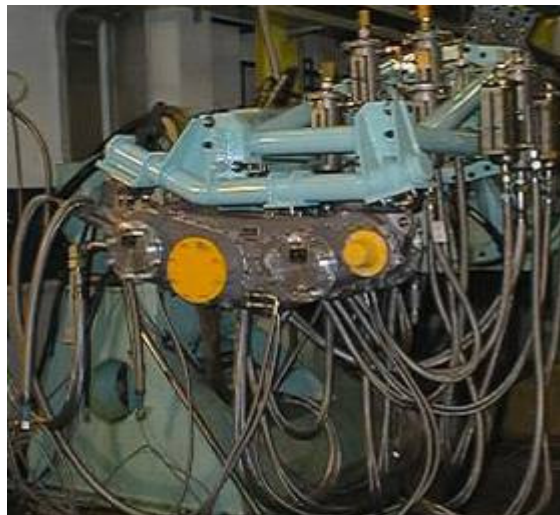
does synergy with



RESEARCH & DEVELOPEMENT



Endurance & attitude test bed, test, lubrication lines, drive train, static & dynamic loads application, data acquisition. Scavenge & pressure oil pump test



does synergy with



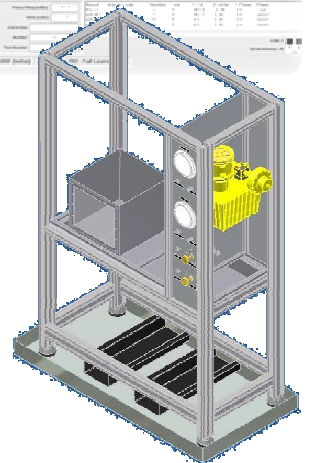
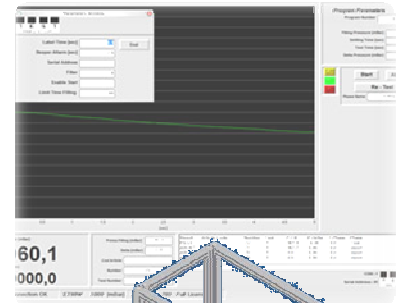
END PRODUCTION LINE TEST BED



Flow & pressure test, right assembly test for delivery, performance check for scavenge and pressure oil pumps, flushing & washing aluminium cases and nozzles.



High & low pressure test bench: aluminium case goodness, combustor chamber test, slip ring assembly.



Combustor nozzles hot temperature air flow test bench



does synergy with

SPECIAL TOOLS



Special tools & assembly kit for Gearboxes (bearing mounting, spur gear interference and torque), project and realization.

BAVA s.r.l also is:

AUTOMOTIVE TEST:

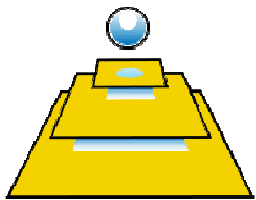
- HVAC (compressor, evaporator, condenser test bench)
- Intercooler, radiators energy balance
- Wind tunnel and brake test bed
- Lubrication engine simulation
- Climatic cells

R&D

Special application with University and research center

does synergy with





R E M

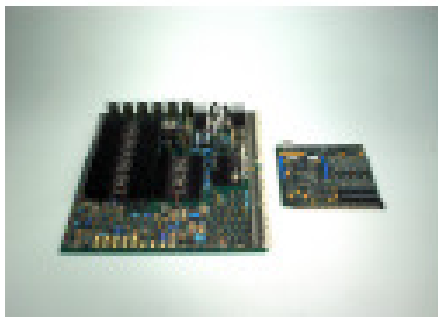
Ricco Electronics Manufactory

www.rem-ricco.it

REM s.r.l. is located in Volpiano, in the hinterland of Turin. The company has worked since 1986 in the electric and electronic sector and the structure is based on advanced technical equipment and on qualified technical staff. REM is involved in civil and military applications and in collaboration with research institutes.

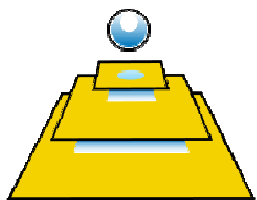
The activities include electronic design and development, prototypes realization, assembly of electronic cards and electric and electronic devices, cabling and electric panels assembly.

The quality system is compliant with ISO 9001.



does synergy with





R E M

Ricco Electronics Manufactory

www.rem-ricco.it

R.E.M. customers include main companies and institutions as ARIS, CERN, ELETTRONICA ASTER (military aircraft harnesses, Eurofighter Typhoon), Istituto Nazionale di Fisica Nucleare (Nuclear Physics National Institute), SPEA, T.RAD ITALIA (railway sector) and other



R.E.M. has developed and participates to the Skyspark Project.
The SkyNET industrial group, a network of high technology companies has been built up for the Skyspark development

does synergy with



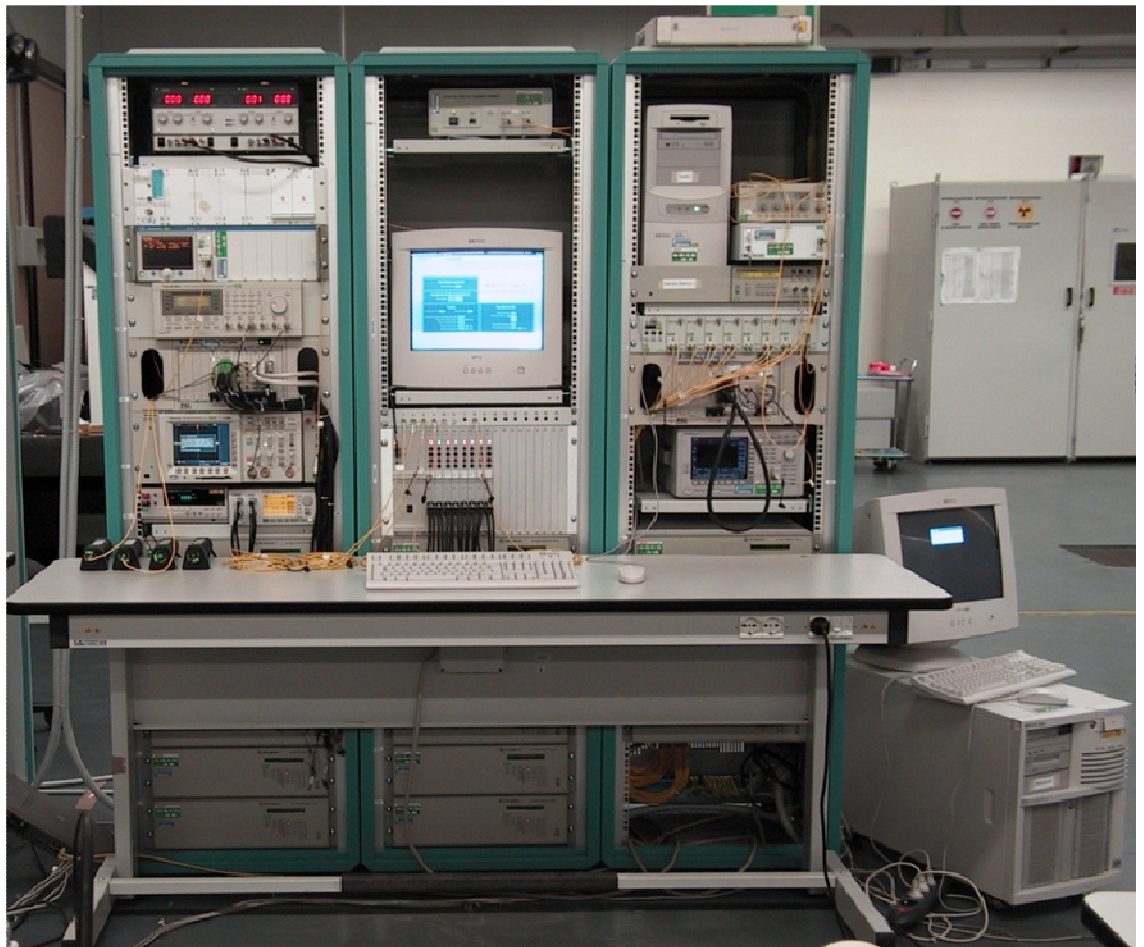
SKYTECHNOLOGY DELIVERS

Level I, II, III Test equipments for electronic systems

Custom test software development

EMI –EMC test software

Validation Support



Some references:
Captor Radar ATE
FPGA based radar TE
Optical Amplifier TE
Test Equipment Revamping
ATE Signal Conditioning

does synergy with



SKYTECHNOLOGY PROVIDES

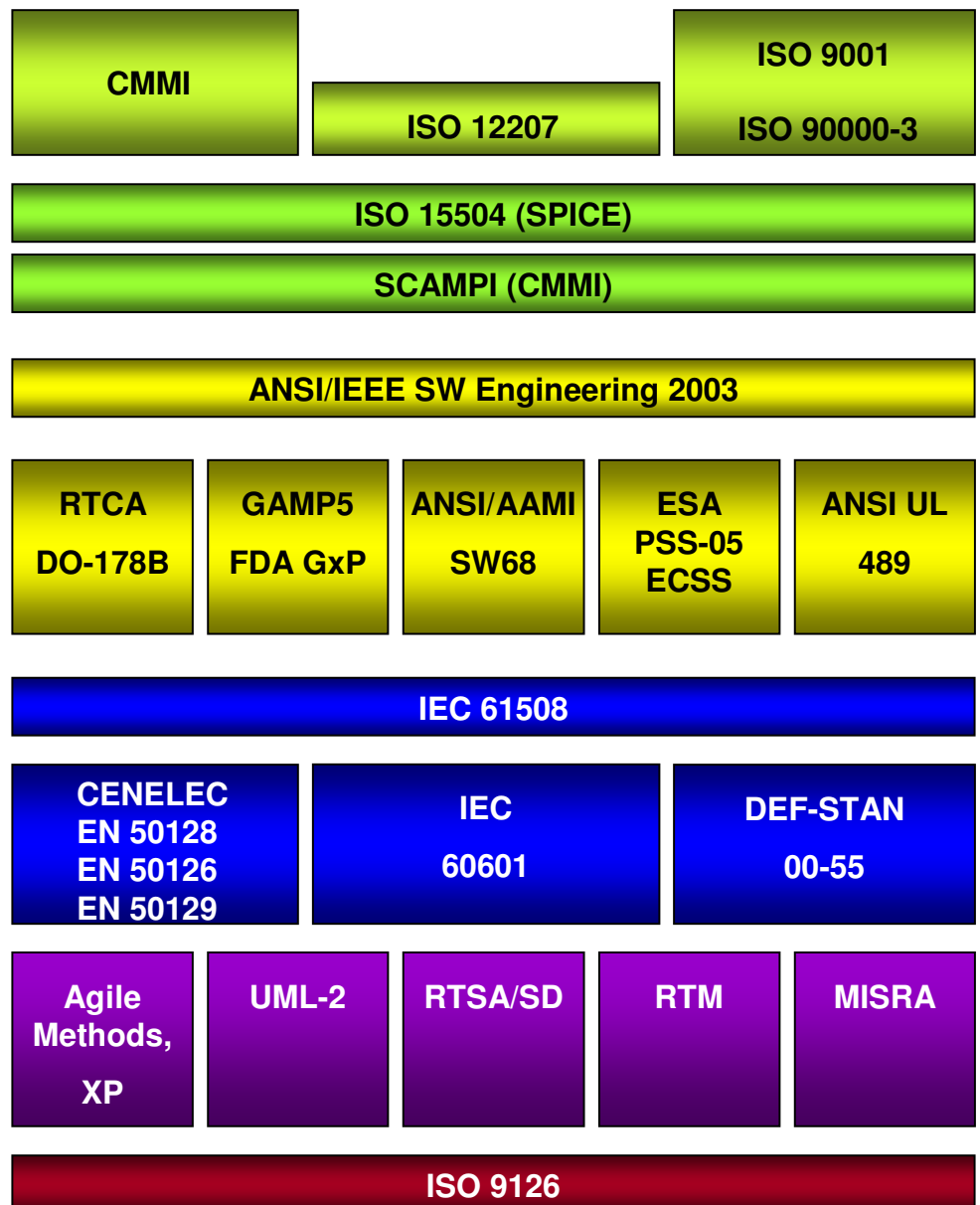
Avionic software development under DO 178

Avionic hardware design under DO 254

FPGA programming

RAMS services

CMMI training and consulting



Some references:

Avionic Processor board under DO 254

AFDX Switch design under DO 254

Conduction cooled VME board design

AW 109 Comms Management System

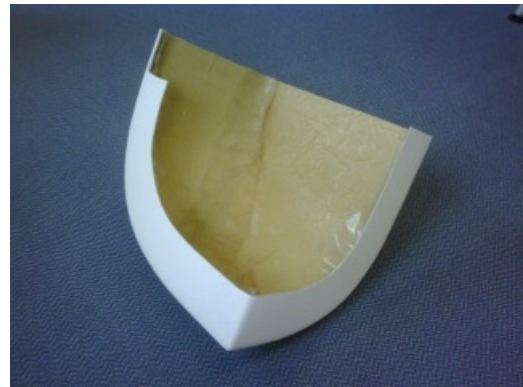
IFF surveillance Radar

does synergy with



Skintec PBT

- The newest generation thermoplastic composite laminate
- Made by
 - Glass fibre, fabric, up to 70% weight
 - Carbon fibre, fabric, up to 65% weight
 - Basalt fibre, fabric, up to 75% weight
 - And an IP thermoplastic PBT based resin “in situ polymerized”



does synergy with

Skintec PBT unicity advantage

Very fast processing

- Press thermoforming
- No original warpage under heat
 - The “in situ polymerized” resin has no first process memory
- Stable up to abt 200 °C
 - Fast softening at higher temperatures
 - Fast cristallition over 200 °C
- Stable at very low temperatures
- Not measurable shrinkage



Test sample data

- Skintec PBT 1212 , 0,6mm thickness
 - Glass fabric, balanced
- Skintec PBT 1385, 1,3mm thickness
 - Glass fabric, balanced
- Heating cicle RT up to 250 °C
- Mould temperature 80 °C
- Moulding closure max 15 sec
- Mass cristallisation max 30 sec

does synergy with

Skintec PBT applications

General applications

- Hollow articles like Aeolic blades
- Structural shaped parts of large and small size, automotive and not automotive, lighter than RTM and cheaper than RIM
- Any Lay up
- Glass, Carbon or Basalt fibres



Aeolic fan – example only



Gulfstream G650 rudder – example only

Aerospace application

- Main structures
- Secondary structures
- Interiors
- Skins
- other

How is supplied

- Up to 3 m wide continuous laminates
 - Any composition
 - Homogeneous thickness
 - Homogeneous lay up
- Preforms already lay up
 - Any composition
 - Any variable thickness
 - Any variable lay up



Skintec PBT laminate

does synergy with

Mission

In every application field, design's always a strategic resource to enhance companies business success: it enables differentiation between products, allowing a more efficient and competitive strategy to create economic value.

Design, innovation, know-how transfer: that's ROSSOVIVO DESIGN! A product design and engineering B2B society founded in I3P, the Innovative Enterprise Incubator of the Politecnico di Torino, Italy.



Everything is expressed in being able to offer to customers a complete proposal, fully tailored according to their specific needs, with great advantages in terms of time and cost reduction for starting manufacture.

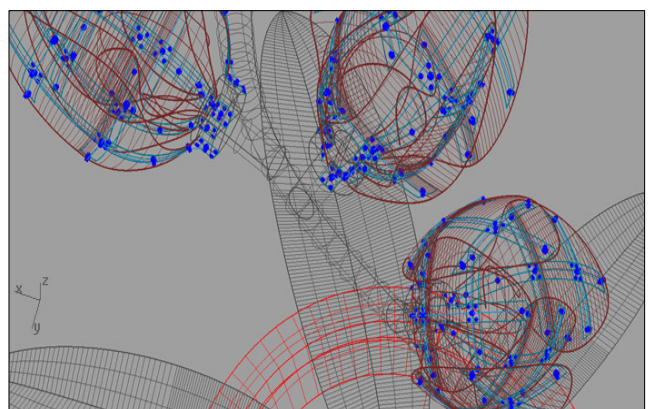
ROSSOVIVO DESIGN is able to follow all the new developing product steps, from the initial brief to the issues related to the beginning of manufacture, always considering the technical, regulatory and economic factors related to implementation.

All this is realized through a permanent corresponding interaction exchange with the Customers R&D department apt to verify the feasibility of the proposed contents in terms of engineering and industrialization.



This ROSSOVIVO DESIGN approach allows customer companies to increase their technological and manufacturing assets, diversifying at the same time business and product range, opening them to new markets and giving them a better competitive position in higher assessments.

ROSSOVIVO DESIGN, winner of many awards, including the UN.I.VER. special prize at the Start Cup edition 2008, counts a lot of collaborations with Italian and foreign excellence research centers.



does synergy with

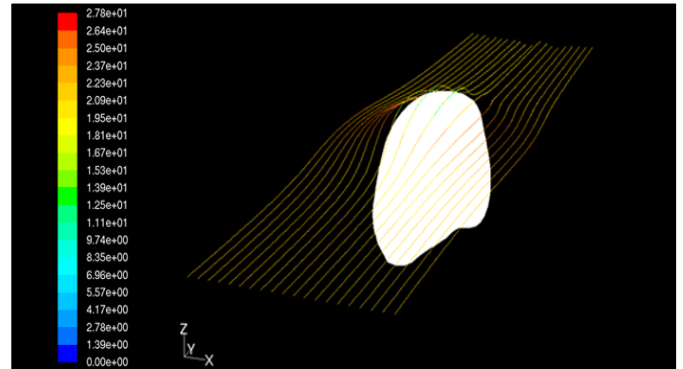


Services

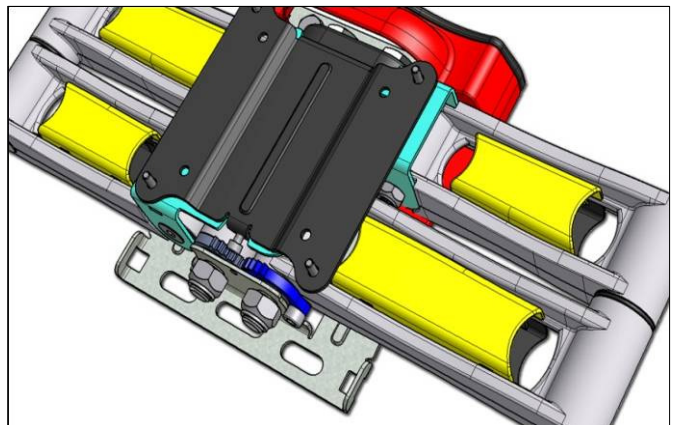
- Styling studies
- Design
- New products development consulting
- Brand identity
- Feasibility analysis



- Research prototypes
- Rapid prototyping
- Production-lines development
- New materials research
- Reverse engineering



- Aerodynamics analysis and simulation
- CAS and animation
- Surfaces mathematical definition
- CAD
- Virtual modelling



does synergy with





www.ares-srl.com



www.sasgroup.it



THE SYNERGIES



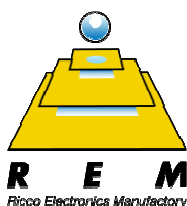
www.frigoriferibava.it

Frigoriferi Bava s.r.l.

Head office: Via San Quintino 26/A – 10121 TORINO
Operative plant: Via San Felice 15 – 10092 BEINASCO
ph./fax +39 011.3496606

Alessandro.Griva@frigoriferibava.it

Riccardo.Ubino@frigoriferibava.it



www.rem.ricco.it

R.E.M. s.r.l.

Via Venezia 34/H, 10088 – Volpiano (TO)
ph. +39 0119881540 – fax +390119952024

Claudio Ricco - info@rem-ricco.it



www.skytechnology.it

Skytechnology s.r.l.

Milano Via Francesco Gonin,55 – ph. 02 370511
Torino corso Svizzera 185 – ph. 011 7715 774

Roma Via Adolfo Ravà 124 – ph. 06 45439361

Luca.Ravera@sky-team.it



www.structurapanel.com

Structura s.r.l.

Via Corona 1, 48027 - Solarolo (RA)
+39 054652637

Gianluigi Creonti +39 3456902630

g.creonti@structurapanel.com

we also collaborate with



www.rossovivodesign.it



www.sibilia.it



www.medilabor.com



www.projecad.it





altair consortium – Italy

head office: Casale Monferrato (AL) – corso Indipendenza, 7 – +39 0142 453958

operative office: Pisa (PI) – via Asmara, 14 – +39 050 45463

www.altairconsortium.com – info@altairconsortium.com

